

WebComets: A Tab-Oriented Approach for Browser History Visualization

Daniel Cernea^{1,2}, Igor Truderung¹, Andreas Kerren², and Achim Ebert¹

¹Computer Graphics and HCI Group, University of Kaiserslautern, P.O. Box 3049, D-67653 Kaiserslautern, Germany

²Computer Science Department, ISOVIS Group, Linnaeus University, Vejdes Plats 7, SE-35195 Växjö, Sweden
{cernea, i_truder, ebert}@cs.uni-kl.de, andreas.kerren@lnu.se

Keywords: Browser history visualization, glyph-based techniques, visual knowledge discovery, time series, parallel browsing.

Abstract: Web browsers are our main gateways to the Internet. With their help we read articles, we learn, we listen to music, we share our thoughts and feelings, we write e-mails, or we chat. Current Web browser histories have mostly no visualization capabilities as well as limited options to filter patterns and information. Furthermore, such histories disregard the existence of parallel navigation in multiple browser windows and tabs. But a good understanding of parallel browsing behavior is of critical importance for the casual user and the behavioural analyst, while at the same time having implications in the design of search engines, Web sites and Web browsers. In this paper we present WebComets, an interactive visualization for extended browser histories. Our visualization employs browser histories that capture—among others—the tab-oriented, parallel nature of Web page navigation. Results presented in this paper suggest that WebComets better supports the analysis and comparison of parallel browsing and corresponding behavior patterns than common browser histories.

1 INTRODUCTION

Since the release of the World Wide Web to the public, the Internet instantly became an important source of information as well as a communication platform without which today's world is hard to imagine. The number of registered domains increased in the last decade from 35 to approximately 350 million, and the trend is accelerating rapidly.

While different approaches have been developed to navigate this mass of information, almost all of them are still based on the well-known Web browser. Through the browser, users search for a particular piece of text or information, they work on or through the Internet, they stream entertainment media or communicate (Kleek, 2010). As a result, the logging features of our browsers—called Web browser histories—have the ability to reflect our requirements, interests and activity. Therefore, it seems that an efficient examination of our browser histories offers the opportunity of retrospectively inspecting users' behavior on the Web.

But in recent years, the paradigm of Web navigation has shifted and many browsers started

implementing “tabs” to support parallel browsing. Tabs allow users to access and explore multiple Web pages simultaneously. While similar, this experience is still significantly different from the one of using multiple browser windows, as the more lightweight tabs allow users to have an overview of the opened Web pages and even organize (e.g., group) the various tabs by the topic of the loaded page. The importance of tab-based operations can be further supported by the work of Miyata et al. (Miyata, 1986), where the presence of foreground and background tasks and their interconnection in the human mind is emphasized from the perspective of cognitive psychology. As such, Web browser tabs are specifically designed to follow this principle and allow users to distribute their attention based on this model.

As a matter of fact, a recent paper (Huang, 2010) highlights that 57.4% of Internet sessions in the browser make use of tab-based parallel navigation. Other findings comprise that these values fluctuate between 4-85% (Viermetz, 2006). While not conclusive, such a wide range suggests an even more important aspect: there is currently only limited information and insight into the way users explore

and organize their parallel browsing experiences, and a visualization tool would be needed that is capable of capturing and reflecting the intricacies of online navigation today. Such a powerful representation enabled by meta-information about user online sessions, has the potential to simplify the tasks of researchers in fields like information retrieval and behavioral sciences, as well as offer an alternative to the casual user who wants to explore his online multitasking and browsing habits.

Sadly, in most cases the representation of the history data is limited to a textual list of Web site names and URLs that is sorted based on a certain criterion, e.g., chronological or by load frequency. Additionally, these browser histories give little insight in the call hierarchy of the Web pages or the relevance of a particular site to the users. In other words, while browsers offer support for parallel browsing, most current histories fail to capture this aspect (Huang, 2010) and thus do not reveal any interconnection patterns between the Web pages or user sessions. Thus, as temporal features are not sufficiently highlighted in conventional histories, one cannot recognize the connections between Web sites and browser windows and tabs. This information is relevant in a setting where users now engage in parallel navigation and distributed attention between many open browser tabs and windows.

In this paper, we address the problem of designing an interactive visualization tool for Internet browser histories that supports intuitive search operations based on content and context information, and that allows the tool user to more quickly find, compare and analyze parallel navigation behavior based on a set of existing—e.g., those described in (Huang, 2010)—and novel metrics. The remainder of the paper is organized as follows. First, we focus on research that is relevant to the topic at hand and continue with a requirement analysis. This is followed by a detailed discussion of the data gathering process together with the design decisions and the featured interactions of our proposed visualization. In order to validate our approach, we then describe an evaluation of our tool. Finally, we conclude and provide future research directions.

2 RELATED RESEARCH

Maybe the most common approach for visually encoding browsing histories are tree representations. Tools like MosaicG (Eric, 1995), PadPrints

(Hightower, 1998), Organic Bookmark Management (Shen, 2011), WebMap (Doemel, 1994) and Domain Tree Browser (Gandhi, 2000) use one or multiple vertical or horizontal 2D trees to represent the domain-structure of the navigated Web sites. In some cases, these tree views are coupled with additional list views that highlight the temporal order of visitation, as the tree representations do not reflect the temporal succession of events. Additionally, in many cases screenshots of the Web pages are used as thumbnails embedded in the nodes to support the recognition process (Eric, 1995; Hightower, 1998; Shen, 2011). Still, all these approaches represent a Web page only once in the tree, even if it is visited multiple times.

An alternative 2D graph representation focuses on capturing and visualizing the branching events in the navigation path (Waterson, 2002). These visualizations manage to capture the sequential aspect of the browsing process, as each accessed page is drawn as an additional node in the graph. If the user navigates back and accesses a different Web site, the resulting branch will be accordingly represented in the visualization.

A slightly different 2D space-filling solution is offered by the Trails plug-in (Yu, 2011) that supports a hierarchical, chronological and group-based representation of the visited pages. Furthermore, it offers a statistical overview of the most often visited Web sites. Another method for representing browser histories is highlighted by solutions that employ one (Kaasten, 2000) or multiple (Cockburn, 2003) interconnected linear views that are enhanced by graphical elements (e.g., thumbnails).

Besides 1D and 2D solutions, Web browser histories have been developed that employ multiple dimensions or intuitive metaphors. VISVIP (Cugini, 1999) is a 3D representation of a navigation log, where two dimensions are used for drawing the Web site structure, while the additional third one encodes the temporal information. On the other hand, the combo WebBook and WebForager (Card, 1996) use the concept of a book to give an overview of the Web sites as well as offer an intuitive information-space for the user.

A special class of browser histories is represented by the statistical summary histories. Tools like SlifeWeb (Slife, 2012), RescueTime (Rescuetime, 2012) or Eyebrowse (Kleek, 2010) are mainly focused on time management and analytics, and allow users to generate their own statistic view about how they—or others—navigate the Internet.

However, browser histories are not the only type of data revolving around complex, interconnected temporal events. Other time-series visualizations employing similar visual concepts to our approach include World Lines (Waser, 2010), a visualization technique for exploring the alternative paths of heterogeneous simulation runs, and LeadLine (Dou, 2012), a visual analytics tool for identifying and representing meaningful events in news and social media data.

While diverse and functional, none of these methods focuses on the complex parallel browsing habits of today, where tabs and windows have become means for the user of organizing his thoughts, actions and accessed information (Huang, 2010). The importance of a tool for visualizing, analyzing and comparing parallel browser behavior is further highlighted in (Aula, 2005), because users tend to use multiple windows and tabs as means for backtracking (e.g., users abandon the use of in-browser back operations in favor of opening new tabs and switching between them) and multitasking (e.g., users interact with one tab while Web pages are being loaded and processed in others). Similarly, findings from (Spink, 2006; Weinreich, 2006) suggest that users often employ parallel browsing in Web search tasks for reasons like comparing search results, executing multiple queries, interacting with a page while others are being loaded, etc.

3 REQUIREMENT ANALYSIS

To support flexible search and analysis efforts, all control and interaction elements that users employ to organize complex and parallel browsing sessions—such as windows–tabs and back–forward operations—need to be recorded and graphically represented in a first step (cp. Subsection 4.1). The captured data organized into a set of different user profiles will be at the core of the later visualization. It has to embed rich meta-information that could be of interest for the user of WebComets, i.e., for researchers in information retrieval, behavioral sciences and related fields (called tool user or analyst in this paper). Following the study described in (Huang, 2010), typical research questions for a better understanding of parallel browsing behavior on the Web are for example: *When and to what extent are users parallel browsing on the Web? Or what affects parallel browsing behavior during interaction with Web search results?*

Another possible research question is to identify reasons why users revisit pages—for example,

because of monitoring pages (Kellar, 2007; Adar, 2008)—and how this is typically done in a multi-tab browser environment. For supporting such studies and for finding answers for such questions, a visualization tool has to offer specific functionalities. We have composed a list of requirements that need to be satisfied by a browser history visualization based on preliminary studies, user feedback about browser histories and their limitations, and information about the nature of parallel browsing behavior from the previously referenced publications. Fundamental requirements for the visualization of the captured data are:

- The visualization should offer an *overview* of the loaded data and *support detailed investigations*. This can be achieved by means of tailored interactions and methods like “detail-on-demand”.
- The *temporal flow* of the visualized navigation sessions needs to be clearly distinguishable. While most Web browsers only display a chronologically sorted list of the accessed Web pages, it is important that the temporal dependencies are visually and relationally highlighted.
- For each visited Web page, *additional meta-data* needs to be captured like the duration of each visit or the duration of interacting with the Web page. While many solutions already count the number of executed accesses to each Web page, it is important to visualize the temporal sequence of events related to any sequence of navigated pages because documents may be inspected more often and for longer periods.
- *Web site categories*, like search engines or news Web sites, should be introduced and represented. Current browsers support bookmarking of Web pages, which implies saving the Web page’s address while at the same time tagging it with the help of keywords or categories. These operations increase the retrievability of stored bookmarks and should also be offered by our system.
- The visualization should clearly represent which *navigation path*—or sequence of visited Web pages—the users have followed during their browsing session. This includes information about what browser windows and tabs have been opened and closed, and how these are connected to particular accessed documents. Thus, it will be possible to reconstruct the steps that lead to the opening of a particular Web page—a missing feature in many related works.

Requirements that improve scalability (with respect to log size and number of user profiles) and analysis possibilities:

- *Visualizing multiple browsing histories* at the same time should be supported in order to allow comparison and analysis operations (e.g., detect if multiple users have similar interests or if users have communicated in a certain time period). This feature is mostly not supported so far.
- *Connections between similar Web sites* should be emphasized as these might be relevant alternatives in search and analysis tasks.
- Our tool users should be able to *search for particular Web pages* based on content (e.g., title or category) and context information (e.g., approximate duration of access or pages accessed prior to the one in question). While content-based search is present in all history lists, a search for the context is not supported in most cases, as this requires additional information about the navigation paths the user followed.
- Equally important for the analysis of parallel browsing behavior is the *search for navigation patterns*, i.e., finding specific structures (motifs) in the navigation graph which results from branching out from a linear navigation behavior by using tabs or additional browser windows.

4 WEBCOMETS

WebComets is a system for the interactive visualization of extended, tab-based browser histories. It was implemented in Adobe Flash ActionScript, with both online and standalone capabilities. The representation and interaction metaphors it incorporates satisfy the requirements highlighted in the previous section. Figure 1 shows a screenshot detail of our tool. To achieve the required functionality and analysis capabilities, WebComets cannot solely rely on information gathered by standard logging systems. Thus, we propose an extended logging mechanism as described in the next subsection.

4.1 Extended Browser History

Some of the previously highlighted requirements cannot be achieved with the history features of major Web browsers. For example, browsers like Mozilla Firefox or Internet Explorer do not record the duration for which a user has actively interacted with a Web page. More importantly, browsers do not focus on capturing the parent-child relationships between accessed Web pages and even less the connections between opened tabs or windows. Other

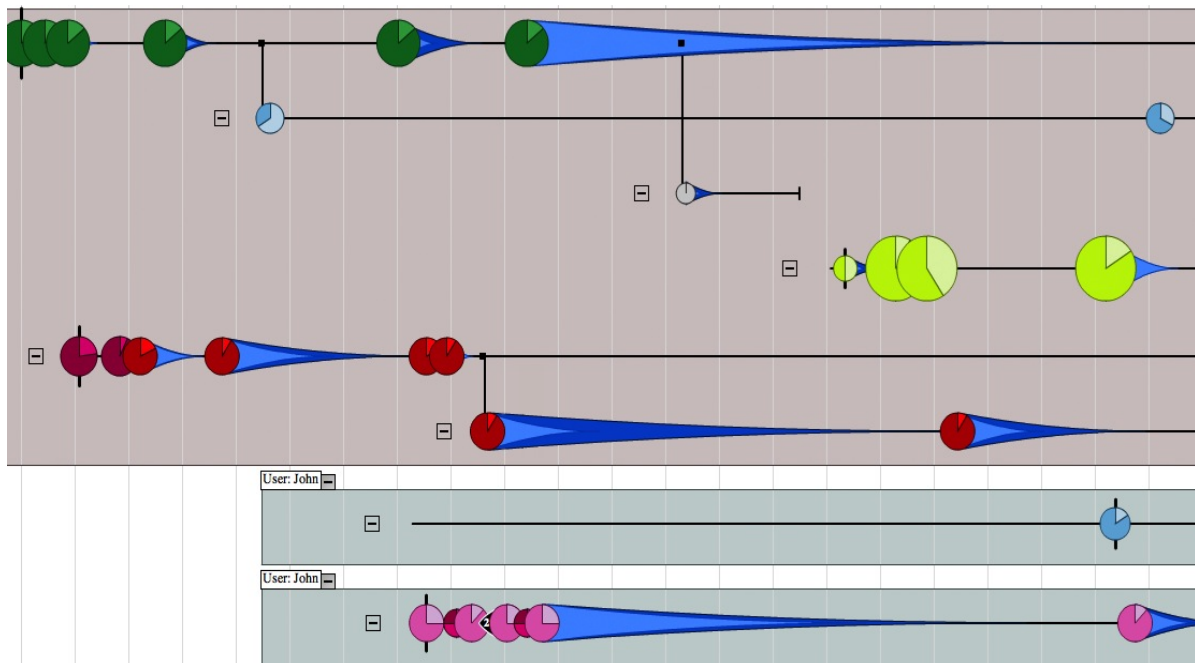


Figure 1: WebComets visualization of the parallel browsing histories of two users (light-brown and light-grey background). Each horizontal line represents the timeline of a tab that the user has opened, while vertical branches highlight new tabs that have been created by clicking a hyperlink in the parent tab. The comet glyphs encode loaded Web sites and their color coding represents topics. Their position on the time axis depends on the moment when they were accessed. In the current visualization, one can notice that the first user had up to six tabs open within the shown time. The second user employed two browser windows without additional tabs and spent most of his/her time on one Web page as represented by the long comet tail in the second window.

researchers have also encountered this difficulty when investigating the parallel browsing behavior of Internet users (Huang, 2010). The unavailable information included, among others, missing source tabs for branching operations and no information on how a tab or window was created (new tab, hyperlink click).

To address this, we developed a Mozilla Firefox browser add-on with the help of Javascript and libraries like jQuery and Kinetic. The add-on incorporates the ability of recording and saving an Extended Browser History (EBH) inside an SQLite database. The information collected like this can be subsequently accessed and visualized for multiple browsing sessions and users.

For any current user profile, the extension saves the navigated URLs together with relevant additional information. The complete EBH includes a subset of the metrics employed in (Huang, 2010) and a set of additional metrics relevant to the analysis and comparison of parallel browsing habits and behavior. Thus, for each user profile, the EBH records the following information:

- user profile information (such as username),
- opening and closing times for each tab and window (tab and window sessions), as well as
- type of creation for each tab and window, i.e., opened blank or through a link from another tab / window (branching).

To complement this, the following data will be recorded for every accessed Web page:

- The title of the Web page including its URL.
- Information about how a Web page was opened: through direct input of the URL in the address bar by the user, through clicking of a link in another Web page, or through the browser’s integrated back/forward operations.
- Category of the Web page based on a static list of Web domains.
- Number of accesses to a domain and a particular URL (pageview).
- Additional time intervals: total time – the time interval when a Web page was loaded and discarded; focus time—the time interval for which a Web page was in the foreground; active time—the time interval for which the user interacted with a Web page.

Note that the tab switches metric proposed by Huang et al. is currently not being stored in the EBH, as we argue that additional time intervals offer an alternative view for the distribution of the user’s attention over multiple tabs and windows. In the following, we highlight the visual design and

interaction capabilities of WebComets together with supplementary information about the EBH.

4.2 Design

In order to satisfy the requirements highlighted in Section 3, the WebComets visualization has to consider a variety of aspects. Probably most important is the representation of the temporal dimension and the mapping of the Web pages to a time axis. In order to use the larger width to height ratio of modern screens (widescreen), a visualization concept was devised that maps the timeline to the horizontal axis, from left to right. In this representation, each accessed Web page is displayed as a circle and gets assigned its corresponding position on the timeline (x-axis).

The encoding of the parallel navigation that the users are involved in by using multiple browser windows and tabs is another important aspect of the visualization. WebComets represents each browser tab as a separate horizontal line segment that is parallel to the time axis (Figure 2). This combination of patches and parallel segments is similar to the representation of a parallel browsing session in (Huang, 2010), as well as to (Krstajic, 2011) where multiple time-series are visualized through a comparable solution.

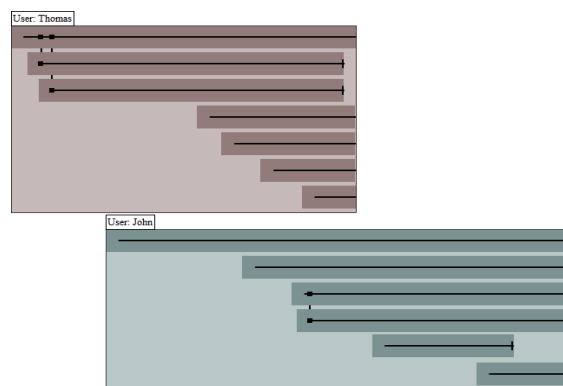


Figure 2: Rectangular representation of two browser windows and their corresponding tabs. The different background colors for the rectangles suggests that the browser windows were created by two user profiles.

As tabs can be opened manually or by clicking a link in another tab, this can result in a tree-like structure that also suggests connections in terms of hyperlinks, but possibly also themes between various Web sites. This parent-child relationship is represented in the visualization as two horizontal lines connected by a vertical one. At the same time, if the user opens a tab manually, there is no clear

way of connecting the first Web page of this tab to any other already open pages. Therefore, a new tab line is shown as disconnected from the rest of the tabs that were already loaded (Figure 2).

At the same time, multiple opened browser windows are visually encoded as framed rectangular areas, where each rectangle contains a tree-like structure of tabs that reflects the opened tabs in each window during the user session, see Figure 2. As the rectangles stretch along the horizontal axis, its left and right margins represent the opening and closing times of the window. Note that a rectangular representation can be also activated at the tab-level to enforce the navigation patterns of the users. All rectangular shapes have a specific background color that identifies them as windows/tabs belonging to a certain user profile.

4.2.1 Visual Encoding

The representation of the visited Web pages has at its core a glyph enriched with graphical elements encoding multiple EBH attributes, as shown in Figure 3. These circular glyphs are mapped on the horizontal axis to the moment in time when the corresponding Web page was loaded, while the vertical positioning identifies the tab in that the Web page was accessed.

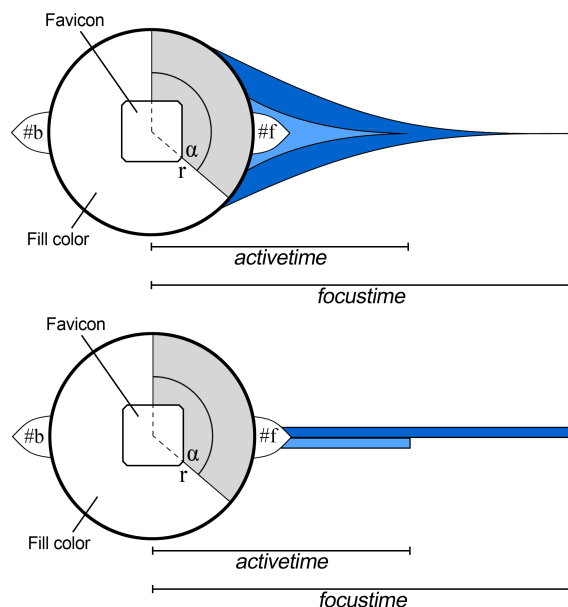


Figure 3: Circular glyph representation of a visited Web page. The figure highlights two versions of representing the focus and active times of the visited Web pages: as a comet tail (top) or as beams (bottom). Active time is represented in light-blue, whereas focus time is in dark-blue.

In a browser history, there are two major elements that suggest the importance of a Web page to the user: the number of visits (*pageviews*) and the time the user has spent actually interacting with the page or leaving it active. As such, we encoded these two metrics with visual attributes that would reflect their importance through size and shape, according to the separability of dimensions (Ware, 2004). The radius of each circular representation encodes the number of visits the user executed in the current session to a particular domain, e.g., “www.google.com”. As a result, pages that are part of domains visited more often will have a larger circular glyph than those that have domains visited rarely.

Tool users have the option to activate a pie chart representation for all glyphs, that captures the ratio of visit counts for the current Web page compared to the overall visit count for the domain. For example, if the domain “google.com” has been accessed six times in total and the current Web page (“www.google.com/search?q=conference”) only two times, then the pie chart will encode a sector of 1/3. This type of information can supply vital insights to the analysts, as in many browsing instances multiple pages of a certain domain are accessed, but only some are accessed more often or for a longer period of time.

As mentioned in Subsection 4.1, EBH includes three time intervals for every Web page: total, focus and active time. Remember that focus time stores the amount of time the Web page was in the foreground and active time captures the duration for which the user was clearly present and interacting with the Web page, e.g., by mouse movements or key strokes. Therefore, the following relationship is valid for any visited page:

$$total_time \geq focus_time \geq active_time \quad (1)$$

As the horizontal axis is mapped to temporal features, it is thus intuitive to encode the total time for a Web page as being represented by the horizontal segment between its glyph representation and the position of the glyph for the following Web page on the same tab. Additionally, the focus and active times are visualized as subsegments of this total time. This is achieved by two alternative representations (cf. Figure 3): the first one has the shape of a comet tail, and the resulting glyph metaphor is meant to suggest the direction of the temporal flow; the second one is a beam-based representation that is more compact, and thus used on collapsed branches and space-saving

representations (see Section 4.3). Both intervals have their origin at the loading time of the current Web page, and their length is proportional to the total time the user spent on the page.

4.2.2 Web Site Categories and Browsing Issues

For both encodings, the glyphs are colored based on a correspondence to Web site categories. The categories support the quick differentiation and detection of various activities that the browser users were involved in. They have been generated based on (Gross, 2004; Katz, 1997), where common in-browser activities are highlighted. For each visited link, a category is selected by the Firefox extension based on the domain of the current Web site. The process is static and employs a database of domains that is divided into 15 categories. The lists of relevant domain names for each category have been generated with the help of the Alexa Top 500 Web sites database (Alexa, 2012). If a domain is not found in the database, the Web page will be included in the “unknown” section. In order to make the different categories as distinguishable as possible, the color selection is based on recommendations from the Colorbrewer Web site (Colorbrewer, 2012). Of course, the user can inspect a legend located in the visualization space on the left hand side. By clicking on a category in the legend view, it is possible to select all Web pages from that group.

A common approach for bookmarking systems in browsers is to store not only the URL and page title, but also the favicon of a Web page. A favicon is a small (commonly 16x16 pixels), squared icon that identifies the domain of the Web page and usually appears next to the address bar of a browser when a Web page is loaded. To improve the chances that a Web page is quickly recognized (Kaasten, 2001) in the WebComets visualization, the users have the option to additionally display favicons over the pie charts, if these icons are available. Due to the small size of the icons, the users can still distinguish the sectors of the pie chart. The size of the favicon is proportional to the one of the circle. For small circles, the icons are also reduced in size. To compensate for this, users can hover the icon with the mouse cursor in order to represent it in its original resolution.

When navigating the Web, users have multiple options to reach a certain URL: type it in themselves, click on a hyperlink, execute browser-specific operations, etc. While some operations suggest relationships between Web pages (e.g.,

hyperlink connections), others might represent a breakpoint in the thought process of the user. Such a case is usually given when users type in the URL themselves. To better highlight this, Web pages that are loaded after a manual input of the address have a short vertical bar sticking out from under their glyph to suggest a possible mental breakpoint, as indicated in Figure 1.

Also, users may access a Web page by utilizing the back and forward navigation buttons of the Web browser. In many modern browsers, these buttons allow the user to navigate backward and forward one or multiple pages. These operations are useful especially in cases where the users feel they have reached an informational dead end. If a Web page was loaded through a back or forward step, this is captured and represented in the visualization through small arrow-shaped elements on the left or right of the corresponding pie chart (cf. Figure 3). The numbers *#b* and *#f* inside the arrows highlight how many back or forward operations were executed at once in order to reach this Web page.

As not all these glyph elements are constantly required, our tool users have the opportunity to enable certain features like favicons and back-forward arrows to be only included in the glyph on demand. This allows them to maintain an overall reduced level of complexity for the glyphs and only access certain information when these could be relevant.

4.3 Interaction

Besides the already presented features of the approach, tool users have additional possibilities to customize and interact with WebComets. The current configuration can be stored inside an option window and includes—but is not limited to—the following: switching between comet tail and beam representations, customizing min and max values for the pie chart radii, enabling or disabling elements like favicons or back-forward arrows, and selecting the EBH attributes to be displayed.

4.3.1 View Transformations

A set of interaction metaphors complement the visualization’s abilities by addressing topics like flexibility, scalability or detail-on-demand.

The WebComets interface supports pan and zoom operations, similar to modern interactive maps. While the panning operation is self-evident, there are two zooming approaches implemented in the tool: one is a regular 2D zoom that allows tool

users to inspect the details in a certain area, while the other is a 1D horizontal zoom along the timeline that stretches the horizontal axis (Figure 4).

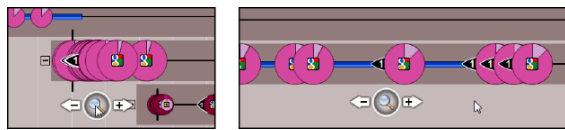


Figure 4: Temporal zoom (1D) along the horizontal time axis: original zooming factor (left) and 30x horizontal zoom (right).

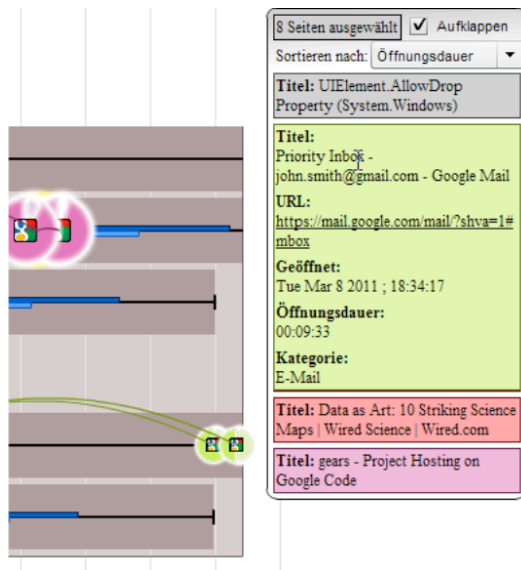


Figure 5: Information box presenting details about the selected Web pages. By moving the cursor over the list elements, additional information is displayed for the current Web page (in light-green).

It might occur that multiple glyphs are partially or almost totally overlapping. Even if the tool user has the possibility to execute timeline zoom commands to compensate for this and clearly separate the overlapping glyphs, this is a vital scalability issue. To deal with this, WebComets displays partially overlapping pie charts by positioning the glyph of the Web page that has been accessed later over the top of the previous one. To further compensate, the tool user can move the mouse pointer over a set of densely grouped circles. By doing so, the glyph with the center closest to the pointer will be moved to the foreground, over the others. This focused glyph is additionally complemented with graphical elements (e.g., favicon, if not enabled globally) and textual information (e.g., Web page title). In cases where the user wishes to focus his attention on the temporal constraints and relationships, all glyphs can be

reduced to dots, minimizing the overlap of glyphs and tails.

Furthermore, WebComets detects instances where two or more glyphs are completely overlapping and replaces these with the one that has the largest radius. In order to suggest the presence of other circles “underneath” it, the border thickness of this circle is increased proportionally with the number of hidden circles. Besides controlling the depth order of the elements, moving the mouse pointer over a glyph or its comet tail/beam opens a tooltip that shows the title of the Web page and its link as well as a set of page attributes customizable by the user (e.g., title, URL, or pageviews).

Selecting a glyph can be done by mouse click, or in order to select multiple glyphs, by pressing the Shift-key plus mouse click. Besides this, tool users can also use the legend to select all elements from a category or search for certain patterns to highlight glyphs that satisfy the search rule. Selected Web pages are highlighted and an information box opens in the upper-right corner of the visualization. The information box contains the attributes of the selected Web page, shown in Figure 5. This box can also be customized in order to include all attributes or a subset of them. In cases where multiple Web pages are selected, the information box displays initially only a list with the titles and URLs of the selected pages. If the tool user moves the mouse cursor over the list, the selected list element will be expanded to present all available information of that page. The background color of each list element matches the category of the Web page. A click on the link (or on the favicon if enabled) will open the corresponding Web page in the tool user’s default browser.

For each selected Web page, WebComets searches the browser history to check for similar Web pages. By default, only pages with the same domain are considered to be similar, but more complicated rules for interconnection can be generated, e.g. pages containing a keyword, pages that have an active time of similar length, etc. They are highlighted by adding links between each selected element and its counterpart. The curved lines (Figure 6) are used for showing the presence of similar Web pages to the selected ones, possibly in areas of the visualization that are not currently visible. Curves can be easily perceived as they contrast with the overall orthogonal representation of our approach. To avoid clutter, curves are drawn in such a way that the probabilities of intersecting curves and a curve intersecting a glyph are reduced. More precisely, our tool computes a predefined set

of possible curves with different curvatures to connect the two nodes and then utilizes a collision detection algorithm to identify the curve that intersects the least number of glyphs.

The tool user could find some parts of the visualized history more interesting than others. Due to this, but also in order to save screen space, he/she has the possibility to collapse tabs or windows that he/she is not interested in. For collapsing the representation of a tab, the tool user has to click the plus icon next to its spawning point; the same is valid for windows. In cases when a tab is collapsed that also has other tabs created by it, all the branches of that tab will be compacted together with the parent tab, and vice versa for expansion. Nonetheless, if a glyph is selected and similar Web pages were detected on any collapsed tab or window, then the corresponding elements are still visible by links and additionally small dots on the tab lines, as shown in Figure 6.

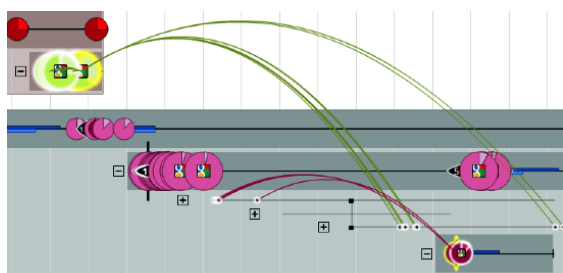


Figure 6: Collapsed view: the presence of query-related Web pages is highlighted on the collapsed tab lines by small dots visible in the lower right part of the screenshot. Connections between the selected pages and other glyphs are highlighted through continuous curved lines.

Furthermore, in order to improve the scalability of this tool and offer the analyst a better overview of a large dataset, the collapsed view can be enabled for all branches. In this mode, the vertical spacing is compressed and the glyphs turn into small dots with a colored halo, thus allowing the WebComets user to inspect parallel browsing behavior in larger histories.

4.3.2 Text and Motif Search

Highlighting different elements in a browser history is closely coupled with searching for Web pages or navigation patterns. Most Web browsers support a text-based search of their records that limits their ability to detect context information. This functionality is also supported by WebComets. Tool users can search for terms and keyword combinations (e.g., apple+pc), strict phrases (by

using quotes, e.g., “apple pc”) or even exclude words from their query (by using the minus sign, e.g., apple-pc).

Besides the possibility to execute a text-based search of the extended browser history’s informational content, supporting the detection, analysis and comparison process of temporal patterns in the navigation graph requires a different approach. Thus, WebComets offers a motif search window (Figure 7) that allows users to define, store and search for custom information and patterns of navigation. Inspired by the building blocks concept in (von Landesberger, 2009; Reeder, 2007), motifs in WebComets are predefined subgraph structures that can be used to filter the current history. Compared to other approaches, the WebComets motif search has the advantages of allowing logical combination of sought patterns (e.g. find all node groups that satisfy motif A and do not satisfy motif B), as well as the possibility to model a large set of node and internode attributes.

These subgraphs can be generated in two ways: either by mining substructures from the currently opened history log files or by manually defining a motif and its corresponding rules. In the first case, the tool user would look through the visualized browser histories and select any subset of glyphs that could be at the core of a parallel browsing behavior. When all relevant elements are selected, the generated motif can be edited further in the motif window to generalize or particularize the final structural pattern. Contrary to this, in the second approach the analyst would start generating a motif by directly building it in the motif window, adding node after node and customizing their attributes based on his experience and assumptions.

As such, users analyzing an EBH can not only look for topics of the visited pages, but also detect navigation motifs. For example, the motif search could detect that in 72% of the cases when an Internet user accesses his/her e-mail account, he/she also opens a Web page from the category “video” in a new tab originating from his/her e-mail page. This might suggest that he/she receives much e-mail with links to video content. Thus, filtering the browser history based on structural aspects can have many applications, for example, detecting a Web page where the tool user knows some attributes of the originating site or investigating similar interest and patterns of navigation between multiple users.

It is also possible to filter out numerical and temporal values by giving exact numbers, suggesting min or max thresholds, or defining intervals. These rules are then incorporated in the motif and

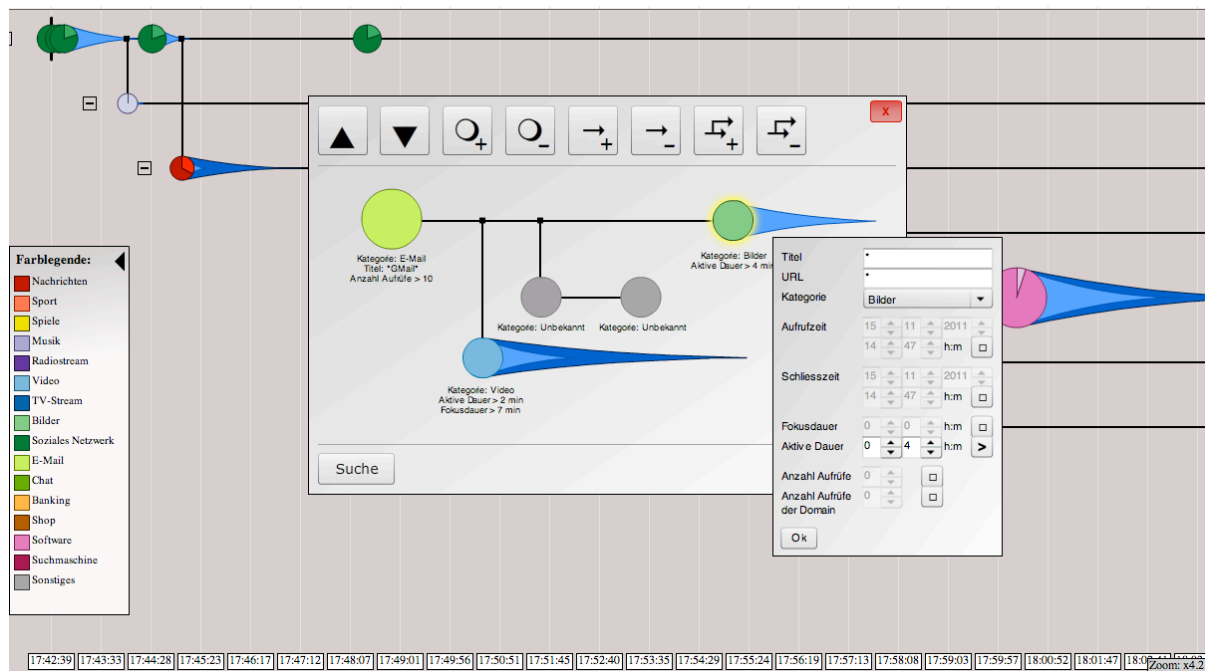


Figure 7: The motif window that helps users construct, save and search for custom structures / motifs based on Web page attributes and context information.

displayed under the corresponding pages. In terms of structure, complex motifs can be built by adding multiple Web pages and highlighting existing relationships between them, be it on the same tab/window or on different navigation branches. Once the motif specification is finished, the analyst executes the search operation and the sum of all the rules will be used for filtering the history. Finally, the nodes that fit the query will be highlighted as already described.

5 EVALUATION

A brief evaluation of the WebComets visualization approach has been executed in order to capture any advantages or disadvantages. The aim of the study was to compare the performance and accuracy of tool users when inspecting and comparing patterns in multiple parallel browsing histories. For this purpose, the participants would interact with the same EBH log files by two different approaches: the WebComets visualization and a list-based browser history (the Firefox browser history was selected for convenience).

The evaluation involved 20 participants with experiences in visual analysis and/or knowledge exploration as well as with extensive background in

using diverse Web browsers and accessing a variety of online applications. All participants had prior knowledge and at least some experience with list-based browser histories. An initial step in the evaluation process was to randomly divide the participants into two groups and attribute a task to them. Each member of the first group would have to solve the task using the WebComets visualization, while the members of the second group used a list-based history. Next, the functionality of the two tools was highlighted to each of the corresponding groups. Note that the data contained in the browsing histories were almost identical in content, except for the fact that the list-based history was not able to represent the additional fields generated and included in the EBH.

The scenario involved the analysis of two browsing sessions from different users. An initial assumption was made that the users have participated at an online conference call where they suggested relevant Web sites to each other. This collaborative browsing approach is frequently used in cases where one party tries to highlight some information to the other. A simple example for this would be the collaboration between two remote students that are preparing for an exam. As a result, both users would access multiple similar or identical Web pages in the same time interval. The test

persons had to determine if the initial assumption of collaboration is supported by the browser histories, and if so, what Web pages might have been involved and in what time interval this collaboration took place.

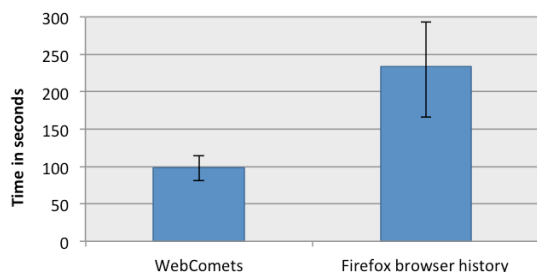


Figure 8: Average time required by the subjects to find the solution to the given task. The narrow black bars encode the standard deviation.

The results were evaluated by inspecting the total time each participant took to find a solution and the time frame he/she reported as part of the conference session. Figure 8 shows that the test persons managed more quickly to find a solution with the WebComets visualization than with the text-based representation of the navigation history. To further support this, the standard deviations have been computed for the average solution times. The importance of these values is further weighted by the reported time frames for the assumed conference session. Actually, the subjects that used the WebComets tool have identified the correct time frame in almost 100% of the cases, as only one participant missed the presence of an additional Web page in both history sessions around the same moment in time. In contrast, the group using the list-based browser history has reported a lower success rate with only a 71% average overlap of the detected collaboration time frame.

Additionally, the participants were given a post-task questionnaire inquiring about the usability, interaction and graphical aspects of the WebComets visualization. Moreover, users had the opportunity to express their opinions freely about the application through a set of open questions. The outcome suggested that users were overall satisfied with the visual representations (e.g., “I found the comets had useful information and were easy to understand”) and interaction possibilities supplied by WebComets (e.g., “I like the back and forward arrows. It’s a better solution than repeating the Web page instance” or “I can oversee all important information in one view”), and that most participants would use

such a tool for analyzing parallel browsing behavior or detecting and comparing browsing patterns.

6 CONCLUSIONS AND FUTURE WORK

In this paper we presented WebComets, an interactive visualization tool for tab-oriented, parallel browser histories. After discussing related work and functional requirements, we focused on the individual components and interactive features of our visualization tool. WebComets allows its users to more efficiently search for patterns in parallel browsing sessions as well as compare and analyze the multi-tab browsing behavior of a group of Internet users. An evaluation confirmed that our approach has met the initial requirements, and our users were able to quickly and efficiently gain insight and find patterns in the history information they were exploring.

As next steps of this research, we plan to make WebComets widely accessible for analysts. While the current version of this tool is focused around log data, design and interaction features, in the future we aim to adapt similarity search algorithms (e.g., automaton-based approaches) that could suggest possible elements of interest to the tool users. Furthermore, we plan to enhance our visualization metaphor by adding a 1-dimensional, orthogonal content-based operator for relative zooming along the time axis in a certain area.

REFERENCES

- Alexa: The top ranked sites in each category, <http://www.alexa.com/top-sites/category>, 2012.
- Colorbrewer: Color advice for maps, <http://www.colorbrewer2.org>, 2012.
- Rescuetime, <http://www.rescuetime.com>, 2012.
- Slife labs time management software, <http://www.slifeweb.com>, 2012.
- Adar, E., Teevan, J., Dumais, S.T. Large scale analysis of web revisitation patterns. In *Proceedings of the 26th Annual SIGCHI Conference on Human Factors in Computing Systems*, CHI '08, pages 1197–1206, New York, NY, USA, 2008. ACM.
- Aula, A., Jhaveri, N., Kaki, M. Information search and reaccess strategies of experienced web users. In *Proceedings of the 14th International Conference on World Wide Web (WWW '05)*, pages 583–592, 2005.
- Card, S.K., Robertson, G.G., York, W. The Webbook and the Web Forager: An Information Workspace for the World Wide Web. In *Proceedings of Human Factors*

- in *Computing Systems (CHI 96)*, pages 111–117, 1996.
- Cockburn, A., Greenberg, S., Jones, S., McKenzie, B., Moyle, M. Improving Web Page Revisitation: Analysis, design and evaluation. In: *IT & Society 1(3)*, pages 159–183, 2003.
- Cugini, J., Scholtz, J. VISVIP: 3D Visualization of Paths through Websites. In: *Proceedings of International Workshop on Web-Based Information Visualization (WebVis 99)*, Florence, Italy, pages 259–263, 1999.
- Doemel, P. Webmap - A Graphical Hypertext Navigation Tool. In *Proceedings of the Second International World Wide Web Conference*, 1994.
- Dou, W., Wang, X., Skau, D., Ribarsky, W., Zhou, M.X. LeadLine: Interactive Visual Analysis of Text Data through Event Identification and Exploration. *IEEE Conference on Visual Analytics Science and Technology*, 2012.
- Eric, M., Ayers, E.Z., Stasko, J.T. Using Graphic History in Browsing the World Wide Web. In: *International WWW Conference*, pages 1–7, 1995.
- Gandhi, R., Girish, K., Bederson, B.B., Shneiderman, B. Domain Name Based Visualization of Web Histories in a Zoomable User Interface. In: *Proceedings of 11th International Workshop on Database and Expert Systems Applications (DEXA)*, pages 591–598, 2000.
- Gross, E.F. Adolescent Internet use: What we expect, what teens report. In: *Applied Developmental Psychology 25*, pages 633–649, 2004.
- Hightower, R.R., Ring, L.T., Helfman, J.I., Bederson, B.B., Hollan, J.D. Graphical Multiscale Web Histories: A Study of Padprints. In: *UIST 98 Proceedings of the 11th annual ACM Symposium on User Interface Software and Technology*, pages 58–65, 1998.
- Huang, J., White, R.W. Parallel Browsing Behavior on the Web. In: *Proceedings of the 21st ACM conference on Hypertext and hypermedia (HT '10)*, pages 13–18, 2010.
- Kaasten, S., Greenberg, S. Integrating Back, History and Bookmarks in Web Browsers. In: *Extended Abstracts of ACM Conference of Human Factors in Computing Systems (CHI '01)*, ACM Press, pages 1–2, 2000.
- Kaasten, S., Greenberg, S., Edwards, C. How people recognize previously seen web pages from titles, urls and thumbnails. In: *People and Computers XVI*, pages 247–265, 2001.
- Katz, J., Aspden, P. Motivations for and Barriers to Internet usage: Results of a National Public Opinion Survey. In: *Internet Research: Electronic Networking Applications and Policy 7*, pages 170–188, 1997.
- Kellar, M., Watters, C., Inkpen, K.M. An Exploration of Web-based Monitoring: Implications for Design. In: *Proceedings of the SIGCHI Conference on Human Factors in Computing Systems*, CHI '07, pages 377–386, New York, NY, USA, 2007. ACM.
- Kleek, M.V., Xu, C., Moore, B., Karger, D.R. Eyebrowse: Real-time Web Activity Sharing and Visualization. In: *28th ACM Conference on Human Factors in Computing Systems (CHI'10)*, ACM, 2010.
- Krstajic, M., Bertini, E., Keim, D. Cloudlines: Compact Display of Event Episodes in Multiple Time-series. *Visualization and Computer Graphics, IEEE Transactions on*, 17(12):2432–2439, December 2011.
- Miyata, Y., Norman, D. Psychological issues in support of multiple activities. In: *User Centered System Design*, D.A. Norman and S.W. Draper (Eds), pages 265–284, 1986.
- Reeder, J., Reeder, J., Giegerich, R. Locomotif: From Graphical Motif Description to RNA Motif Search in Bioinformatics. In: *Bioinformatics 23(13)*, pages 392–400, 2007.
- Shen, S.T., Prior, S.D., Chen, K.M. A Solution to Revisitation using Organic Bookmark Management. In: *Design, User Experience, and Usability. Theory, Methods, Tools and Practice: First International Conference*, pages 46–52, 2011.
- Spink, A., Park, M., Jansen, B.J., Pedersen, J. Multitasking during web search sessions. In: *Inf. Process. Manage. 42, 1*, pages 264–275, 2006.
- Viermetz, M., Stolz, C., Gedov, V., Skubacz, M. Relevance and impact of tabbed browsing behavior on web usage mining. In: *Proceedings of the 2006 IEEE/WIC/ACM International Conference on Web Intelligence (WI '06)*, pages 262–269, 2006.
- von Landesberger, T., Rehner, R., Gorner, M., Schreck, T. A system for interactive visual analysis of large graphs using motifs in graph editing and aggregation. In: *Vision Modeling Visualization Workshop (VMV 2009)*, 2009.
- Ware, C. *Information visualization (second edition), perception for design*. Elsevier Inc., 2004.
- Waser, J., Fuchs, R., Ribicic, H., Schindler, B., Blöschl, G., Gröller, E. World Lines. In: *Visualization and Computer Graphics, IEEE Transactions on*, vol. 16, no. 6, pages 1458–1467, 2010.
- Waterson, S., Hong, J.I., Sohn, T., Heer, J., Matthews, T., Landay, J. What did they do? Understanding clickstreams with the webquilt visualization system. In *Advanced Visual Interfaces*, pages 94–102, 2002.
- Weinreich, H., Obendorf, H., Herder, E., Mayer, M. Off the beaten tracks: exploring three aspects of web navigation. In: *Proceedings of the 15th international conference on World Wide Web (WWW '06)*, pages 133–142, 2006.
- Yu, W., Ingalls, T. Trails-an interactive web history visualization and tagging tool. In: *HCI (10)*, pages 77–86, 2011.